



# RIVAN

*NEW CAPITAL*

A community of **Altameer Arabian Developments.**





# RIVAN

WE ARE HOME



ALTAMEER ARABIAN



# RIVAN

About  
**THE DEVELOPER**



**Altameer Arabian** is a Saudi Egyptian investment company that was established utilizing a long experience in construction and real estate development fields along with partnerships with both local and international consultancy firms. Through its work in Saudi Arabia and the United Arab Emirates, Altameer Arabian came to Egypt with a new vision of creating a fundamental shift in the real estate development field with its projects Rivan, Rivan Square ,and Rivan Tower.

**“Rivan”** was brought to life by the sum of a lengthy experience and the need of reflecting the highest standards of luxury living in Egypt. It encompasses the latest technology in buildings and modern designs that will allow its residents to experience luxury living in an elite community at a prime location in the New Capital.

The main mission of real estate development is to create daily satisfaction through the improvement of the lifestyle quality, Altameer Arabian aims to gain the trust of its clients and fulfill their needs of upscale living, exclusivity and privacy. All of that is being achieved in the New Capital as it is one of the cities designed to embrace the bright future and the coming generations

# RIVAN

---

## **1** THE CONCEPT

*GENERATIONS THAT LAST.*





We imagined and planned the future and proceeded to scatter the first elements of life growth in order to achieve the feeling of serenity inspired by **nature**.



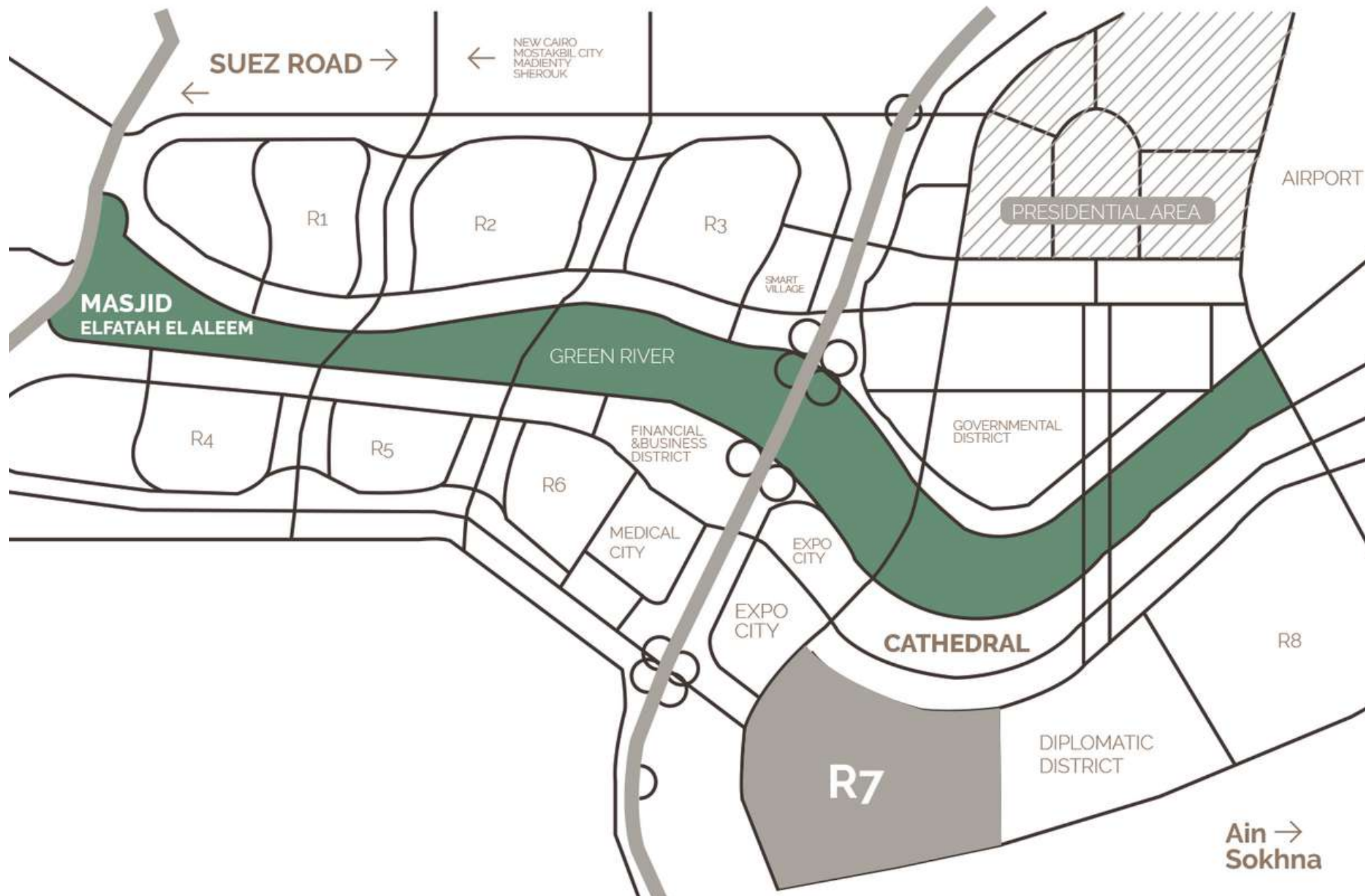
# RIVAN

## 2 THE LOCATION

*STRATEGIC LOCATION*

The **New Capital** is developed with the well thought out plan and vision that aimed for the execution of a smart city integrating a state of art infrastructure with the purpose of providing its citizens with novel solutions.

The **New Capital** was established by the Egyptian government for the main purpose of solving the traffic congestion crisis in Cairo. It is also designed to accommodate the reallocation of a quality life style into a new horizon.







**Rivan** is located in R 7 which is one of the most distinguished and important locations in The New Capital overlooking the Central Park. R7 is considered as the golden district of The New Capital; it is close to the diplomatic area and all the major sites in the New Capital.

EXPO CITY

CATHEDRAL

R7

Straight to  
Regional Road &  
Middle Ring Road  
(New Cairo)

REGIONAL ROAD

GREEN RIVER

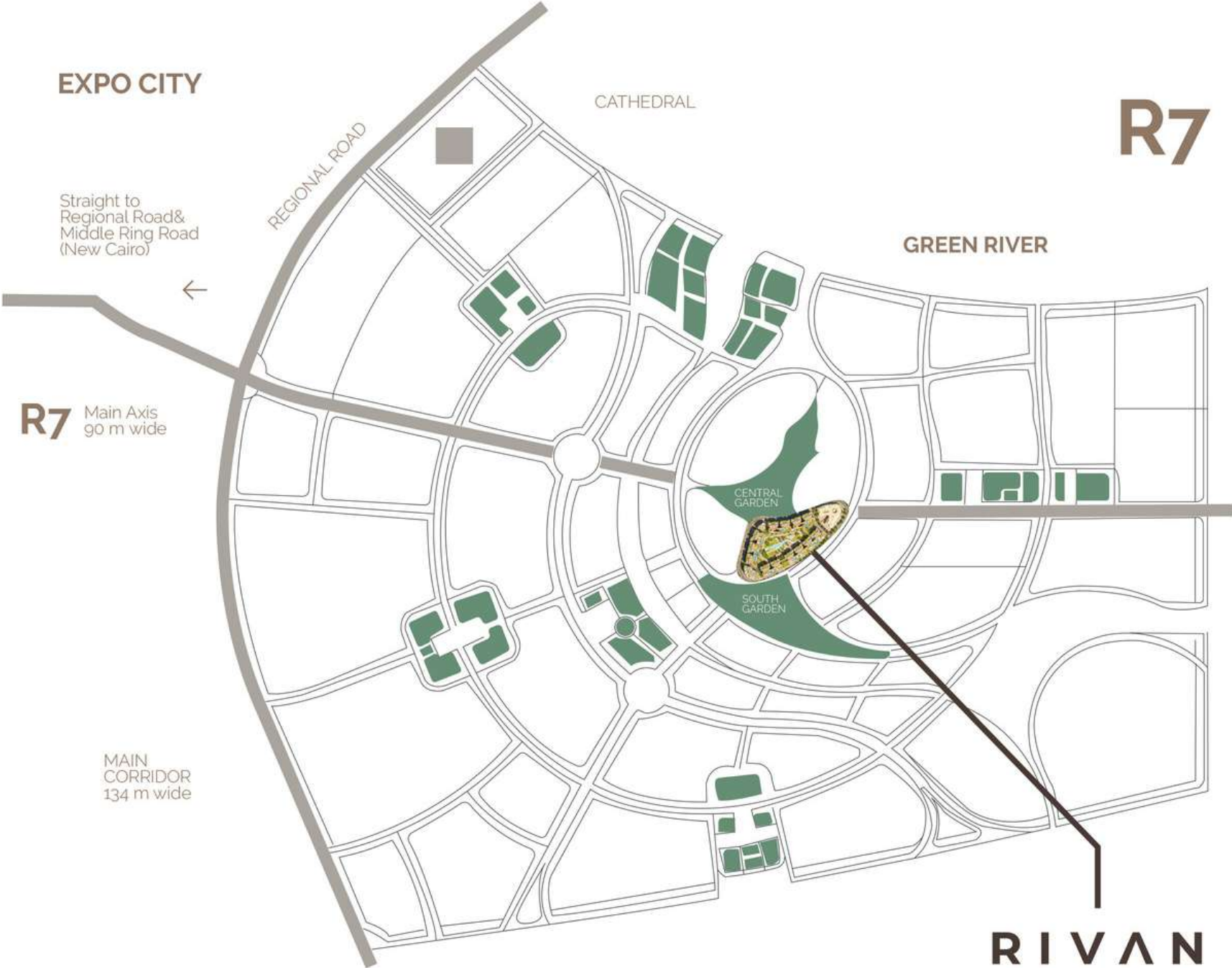
R7 Main Axis  
90 m wide

CENTRAL  
GARDEN

SOUTH  
GARDEN

MAIN  
CORRIDOR  
134 m wide

RIVAN





# RIVAN

MASTER PLAN





# Residential Units Types

- Studios
- Apartments
- Duplexes
- Linked Villas



# RIVAN

---

## 3<sup>THE</sup> AMENITIES

INCLUSIVE AMENITIES



# **Serviced** Apartments







### Underground Parking

An underground parking designed to you the maximum safety in a space that is planned to accomodate all vehicles without an issue in the flow



### Shopping Mall

The best and most iconic brands in Rivan's mall complex guarantee you the best shopping experience.

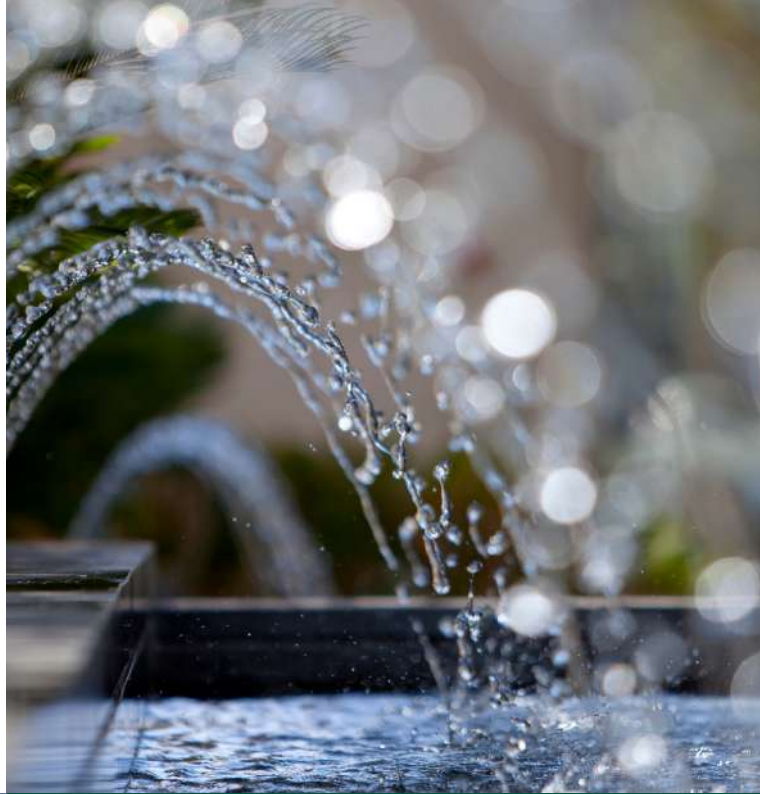


### Kids Area

A well-equipped and safe area for your kids that allows them to be creative and put their social skills to practice

### **Solar Energy**

Solar energy panels allow all Rivan residents to live eco-friendly and minimize consumption



### **24 hour Security**

Our number one priority is your safety and that of your loved ones therefore we provide a 24 H security for better protection and comfort



### **Water Features**

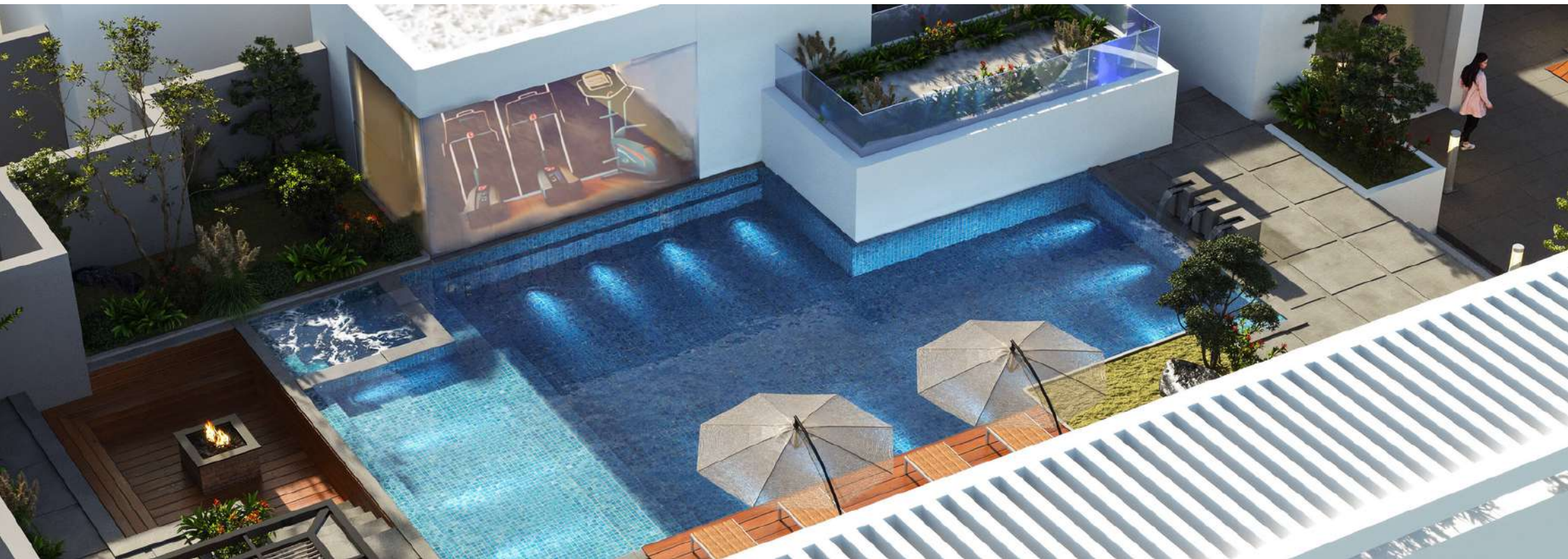
Rivan is designed around the idea of making you feel tranquil and at peace. At Rivan, you will be surrounded by water features and the feeling of serenity everywhere you go





# Roof Clubhouse

With a club house on the roof of every building, Rivan Residence lets you enjoy a unique lifestyle. The rooftop club house has a variety of facilities for you, such as a swimming pool, a gym, a spa, and a jacuzzi.





## **Bicycles Lane**

You will never feel truly connected to nature unless you are out in the open experiencing fresh air and greenery



## **Parks & Green areas**

At Rivan, you will always be surrounded by green areas that will help you rest and bring on the feelings of peace and vitality.





# RIVAN

---

**4** THE  
DESIGN





BEYOND ARCHITECTURE, RIVAN IS PURELY INSPIRED BY GREENS



# RIVAN

## 5 THE UNITS

DESIGN EXCELLENCE



# THE DUPLEX

BUILDING 13

BUILDING NO.  
FLOOR NO.  
FLAT NO.  
13-104



E.LOBBY	( 3.30 X 2.60 )
RECEPTION	( 5.35 X 4.95 )
LOBBY	( 1.95 X 1.10 )
CORRIDOR	( 2.30 X 1.10 )
BATHROOM 1	( 2.85 X 1.90 )
M. BEDROOM	( 4.75 X 3.30 )
BATHROOM 2	( 2.45 X 1.75 )
DRESSING	( 3.45 X 1.75 )
BEDROOM 1	( 4.70 X 3.30 )
BEDROOM 2	( 3.60 X 3.40 )
BEDROOM 3	( 3.90 X 3.55 )
TERRACE 1	( 3.55 X 3.20 )
TERRACE 2	( 2.30 X 1.40 )

TOTAL AREA 403.00M<sup>2</sup>

BUILDING 13

BUILDING NO.  
FLOOR NO.  
FLAT NO.  
13-004



E.LOBBY	( 3.30 X 2.60 )
RECEPTION	( 9.35 X 4.95 )
DINING	( 4.80 X 3.30 )
LIVING	( 3.40 X 2.80 )
LOBBY	( 1.30 X 1.20 )
TOILET	( 2.20 X 1.75 )
KITCHEN	( 4.00 X 3.95 )
BATHROOM	( 2.20 X 1.30 )
MID ROOM	( 3.43 X 3.00 )
TERRACE	( 3.55 X 1.75 )
GARDEN	( 53.00 M <sup>2</sup> )

TOTAL AREA 403.00M<sup>2</sup>

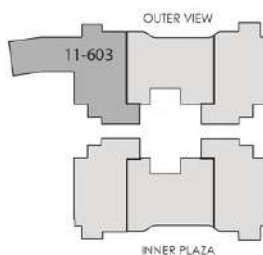




LINKED  
VILLA



BUILDING 11

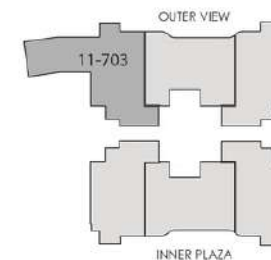


E.LOBBY	(3.30X2.60)
LOBBY	(1.50X1.20)
TOILET	(2.25X1.50)
KITCHEN	(5.00X3.10)
TOILET	(1.75X1.20)
MIDROOM	(3.55X2.00)
RECEPTION	(9.80X7.20)
LIVING ROOM	(3.70X3.30)
TERRACE	(4.10X2.25)
TERRACE	(3.55X1.85)
SWIMMING POOL	(10.8X6.20)

VILLA TOTAL AREA 547.00M<sup>2</sup>

BUILDING NO.  
FLOOR NO.  
FLAT NO.  
11-603

BUILDING 11



E.LOBBY	(2.60X1.85)
CORREDOR	(6.15X1.60)
RECEPTION	(6.40X3.70)
BATHROOM 1	(2.85X1.95)
LIVING ROOM	(5.25X4.80)
M.BEDROOM	(5.25X4.50)
BATHROOM 2	(2.90X1.65)
BEDROOM 1	(3.60X3.30)
BEDROOM 2	(4.20X3.15)
DRESSING 2	(2.35X1.40)
BEDROOM 3	(3.55X3.30)
BEDROOM 4	(4.70X3.45)
BATHROOM 3	(2.45X1.70)
DRESSING	(2.60X1.60)
TERRACE 1	(3.60X3.30)
TERRACE 2	(2.20X1.40)

VILLA TOTAL AREA 547.00M<sup>2</sup>

BUILDING NO.  
FLOOR NO.  
FLAT NO.  
11-703

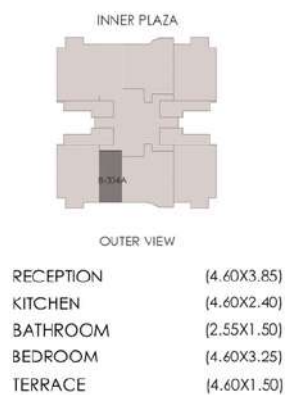
The linked villas with outdoor swimming pools are the most deluxe living spaces at Rivan New Capital. Welcome to the ultimate life of exclusivity



# THE APARTMENTS



1 BEDROOM APARTMENT



TOTAL AREA 78.00 M<sup>2</sup>

BUILDING 8



STUDIO



TOTAL AREA 65.00 M<sup>2</sup>

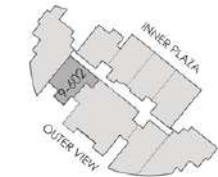
BUILDING NO.:  
FLOOR NO.:  
FLAT NO.:  
8-106A

2 BEDROOM APARTMENT

3 BEDROOM APARTMENT

BUILDING 9

BUILDING NO.  
FLOOR NO.  
FLAT NO.  
9-602

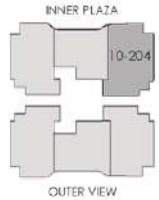


RECEPTION	( 3.90 X 9.70 )
KITCHEN	( 2.90 X 3.00 )
CORRIDOR	( 4.30 X 1.25 )
BATHROOM	( 1.55 X 2.85 )
BEDROOM 1	( 3.40 X 3.45 )
BEDROOM 2	( 4.60 X 3.55 )
TERRACE 1	( 4.00 X 1.40 )
TERRACE 2	( 1.05 X 1.90 )

TOTAL AREA 129.00 M<sup>2</sup>

BUILDING 10

BUILDING NO.  
FLOOR NO.  
FLAT NO.  
10-204



E LOBBY	( 2.60 X 1.80 )
LIVING	( 5.00 X 3.65 )
SALOON	( 5.15 X 3.75 )
TOILT	( 2.60 X 1.40 )
KITCHEN	( 4.00 X 3.00 )
LOBBY	( 2.50 X 2.25 )
BATHROOM 1	( 2.75 X 1.95 )
M. BEDROOM	( 4.65 X 3.30 )
BATHROOM 2	( 2.45 X 1.75 )
DRESSING ROOM 1	( 3.45 X 1.60 )
BEDROOM 1	( 4.00 X 3.30 )
BEDROOM 2	( 3.60 X 3.30 )
DRESSING ROOM 2	( 1.80 X 2.10 )
TERRACE 1	( 3.55 X 1.50 )
TERRACE 2	( 2.30 X 1.40 )

TOTAL AREA 204.00M<sup>2</sup>





PREMIUM  
FINISHING











# RIVAN

A community of **Altameer Arabian Developments**



**RIVAN**  
— SQUARE

**RIVAN**  
— TOWER

**RIVAN**  
— RESIDENCE



**RIVAN**

[Altameerarabian.com](http://Altameerarabian.com)

**19920**